

Navistools Add-Ons
for Autodesk® Navisworks®

The Navistools Reporter is an Add-On tool for Navisworks users that increases the value of published Navisworks models by providing report generating functionality.

Navistools Reporter

Navistools Reporter is an Add-On tool for Navisworks users that increases the value of published Naviswork models by providing report generating functionality.

The Navistools Reporter provides an easy-to-use interface for generating excel or pdf format reports. It uses data linked to objects as properties or attributes or data from any database that has been linked to the Navisworks model.

Reports are generated by choosing the Navisworks search or selection sets or selecting items from Selection Tree and by selecting the required properties attached to objects that are required in the report. The Report window then enables review and sorting of the report before generating into an excel or pdf format.



Profox Companies Ltd

Navisworks, Plant Software & Services

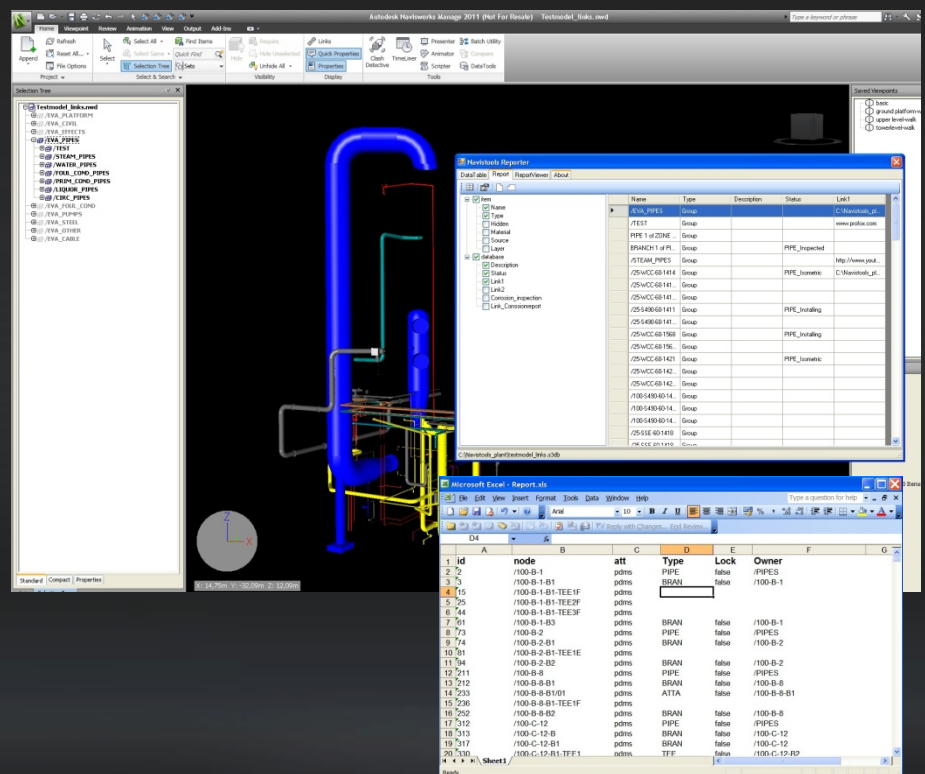
United Kingdom:

The Visualisation Centre, 18 Latham Road,
Cambridge CB2 7EQ
Tel: +44 (0) 777 050 2456

Finland: Kumitehtaankatu 5,
04260 Kerava
Tel: +358 (0)207 416620
<http://www.profox.com>
sales@profox.com



Codemill Ltd.
Software Development
Koivukoskenkatu 17
87100 Kajaani, Finland



Navistools Add-Ons

for Autodesk® Navisworks®

Data Sheet

During the project phase Navisworks is used to make 3D project models available to all of the project team. By using Navisworks the project team can experience the project “before it is real”. However, a project is more than 3D models; each and every component has its own properties, specification, drawings and even photos.

Property information, used for Design Reviews, component purchasing and maintenance is either included in a Navisworks model as attributes or stored in a database in a different location. Property information stored in databases can be linked to a Navisworks model using Profox’s Navistools DataManager software. The attribute data inside the Navisworks model and the property information from databases can be used by the Navistools Reporter to generate reports.

This capability gives greater added value of your 3D model during the whole project phase. All necessary information is within reach and can be processed with reports containing the required component or material information.

Reports are generated based on selecting required items from Selection Sets, Search Sets or Navisworks Selection Tree hierarchy and then using Reporters DataTable for generating the objects for report generation. Hierarchy level defines how deeply the Selection Tree is scanned when generating the objects.

Required object properties and or database properties are then ticked, previewed and sorted by using Populate Report Data Table feature. The Report view is used to check the report before generating it to either an excel sheet or pdf format.

Navistools Reporter can be used throughout the plant or building life-cycle, during the design phase, fabrication, on-site through to inspections and maintenance etc..

Navistools Reporter is equipped with an easy to use but powerful user interface, and is ideally suited to project managers, design managers, on-site managers and other project team members who have different needs to access, use and manage the component and material information. To understand the benefits and functionalities of the solution does not require extensive training.

The Navistools Reporter perfectly compliments the popular BIM concept. It is the system that instantly makes component and project information available as excel-sheets or pdf format reports without having to collect information from different sources.

System requirements:

- Microsoft® Windows® 7 Enterprise, Ultimate, Professional, Home Premium, and Home Basic edition, or Microsoft® Windows Vista® (SP2 or later) Enterprise, Ultimate, Business, Home Premium, and Home Basic, or Microsoft® Windows XP Professional Home 32-bit (SP2 or later) and Professional x64 Edition (SP3 or later)
- Navisworks Simulate or Manage 2012 or 2011; 32/64 bit versions
- AMD Athlon™, 3.0 GHz or faster, or Intel® Pentium® 4, 3.0 GHz or faster (recommended)
- 512 MB RAM (2 GB or greater recommended)
- 1 GB free disk space for installation
- 1,024 x 768 VGA display with true color(1,280 x 1,024 recommended)
- Microsoft® Internet Explorer® 6.0, SP 1 (or later)
- Microsoft Mouse-compliant pointing device
- 1,024 x 768 with True Color graphics card, (1,280 x 1,024 monitor and 32-bit color video display adapter with True Color recommended)